

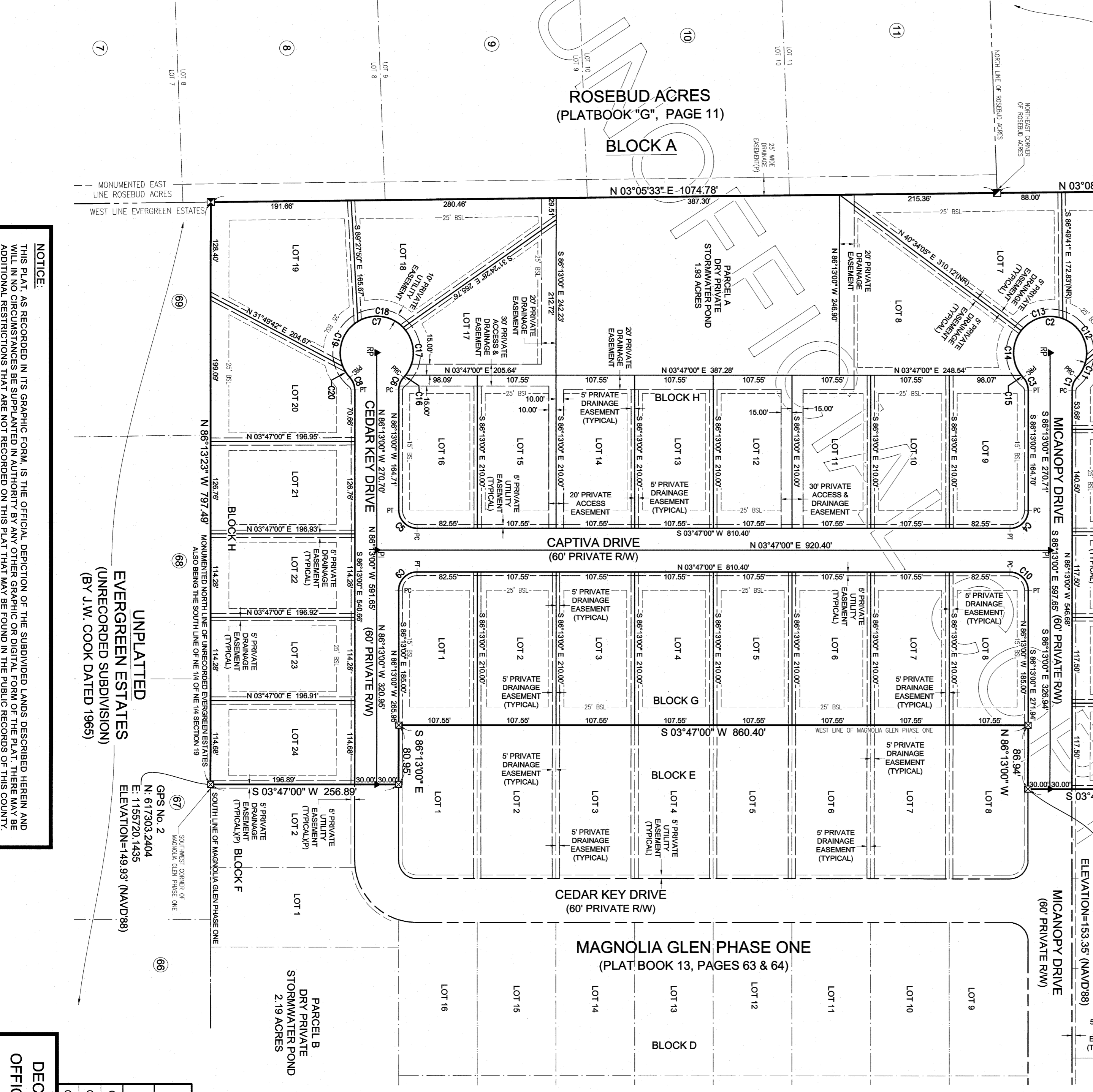
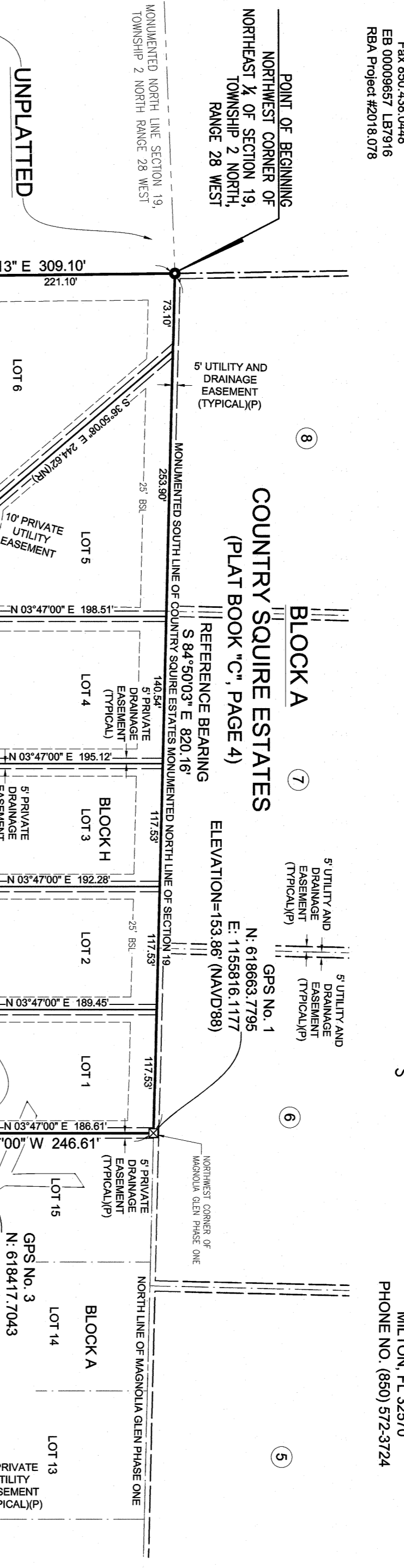
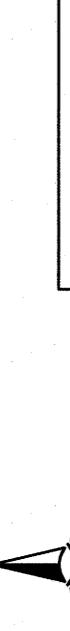
DESCRIPTION: BEGIN AT THE NORTHWEST CORNER OF THE NORTHEAST QUARTER OF SECTION 19, TOWNSHIP 2 NORTH, RANGE 28 WEST, SANTA ROSA COUNTY, FLORIDA...

- 1. BASIS OF BEARING REFERENCE: NORTH AND THE SURVEY DATUM MICHIGAN HERSON IS BASED ON THE FLORIDA STATE PLANE COORDINATE SYSTEM... 2. ALL PLATTED UTILITY EASEMENTS AS SHOWN HEREON SHALL ALSO BE EASEMENTS FOR THE CONSTRUCTION, INSTALLATION, MAINTENANCE AND OPERATION OF CABLE TELEVISION SERVICES...

- 11. FENCES AND WALLS WITHIN RESIDENTIAL ZONES SHALL BE REGULATED BY ARTICLE 6 AND 7 OF THE SANTA ROSA COUNTY LAND DEVELOPMENT CODE. 12. THERE MAY BE ADDITIONAL RESTRICTIONS THAT ARE NOT RECORDED ON THIS PLAN THAT MAY BE FOUND IN THE PUBLIC RECORDS OF THIS COUNTY. 13. MEASUREMENTS AS SHOWN HEREON WERE MADE TO UNITED STATES STANDARDS AND ARE EXPRESSED IN DECIMAL FEET.

PARCEL CURVE TABLE with columns: CURVE #, LENGTH, RADIUS, CENTRAL ANGLE, CHORD, CHORD BEARING. Includes a LEGEND for various symbols used on the plan.

MAGNOLIA GLEN PHASE TWO BEING A SUBDIVISION OF A PORTION OF THE NORTHEAST QUARTER SECTION 19, TOWNSHIP 2 NORTH, RANGE 28 WEST SANTA ROSA COUNTY, FLORIDA



OWNER & DEVELOPER: TIMBERLAND CONTRACTORS LLC. PROFESSIONAL SURVEYOR AND MAPPER: MARK A. MORRIS P.S.M. NO. 6211

DECLARATIONS AND RESERVATIONS: KNOW ALL MEN BY THESE PRESENTS THAT THE UNDERSIGNED CONTRACTORS, LLC, A FLORIDA LIMITED LIABILITY COMPANY, OWNER OF THE LAND AND SHOW AND DESCRIBE HEREIN THAT THE MAGNOLIA GLEN PHASE TWO, BEING A SUBDIVISION OF A PORTION OF THE NORTHEAST QUARTER OF SECTION 19, TOWNSHIP 2 NORTH, RANGE 28 WEST, SANTA ROSA COUNTY, FLORIDA, HAS CAUSED THE SAME TO BE SURVEYED AND PLATTED AS SHOWN HEREON AND DO HEREBY MAKE THE FOLLOWING DECLARATIONS...

CERTIFICATE OF APPROVAL OF COUNTY COMMISSIONERS: I, DONALD C. SPENCER, CLERK OF THE CIRCUIT COURT OF SANTA ROSA COUNTY, FLORIDA, HEREBY CERTIFY THAT THE PLAT COMPLETES WITH ALL THE REQUIREMENTS OF THE PLAT ACT (CHAPTER 177, SECTIONS 177.001 - 177.151), FLORIDA STATUTES, AS AMENDED FROM 1971 TO THE DATE OF THIS PLAT AND THAT THE PLAT COMPLETES WITH ALL THE REQUIREMENTS OF THE PLAT ACT...

CERTIFICATE OF APPROVAL OF CLERK OF THE CIRCUIT COURT: I, DONALD C. SPENCER, CLERK OF THE CIRCUIT COURT OF SANTA ROSA COUNTY, FLORIDA, HEREBY CERTIFY THAT THE PLAT COMPLETES WITH ALL THE REQUIREMENTS OF THE PLAT ACT (CHAPTER 177, SECTIONS 177.001 - 177.151), FLORIDA STATUTES, AS AMENDED FROM 1971 TO THE DATE OF THIS PLAT AND THAT THE PLAT COMPLETES WITH ALL THE REQUIREMENTS OF THE PLAT ACT...

STATE PLANE COORDINATES: HORIZONTAL DATUM: NORTH AMERICAN DATUM 83 (2011) FLORIDA NORTH ZONE. TABLE with columns: STATION, NORTHING, EASTING, LATITUDE, LONGITUDE, SCALE, CONVERSION FACTOR, ELEVATION, COMBINED SCALE FACTOR.